

2025 PRODUCT BROCHURE

SIZE:900X2600MM

APPLICATION SPACE



BUSINESS
CENTER



PUBLIC
BUILDING



TV
BACKDROP



SOFA
BACKDROP



TABLE



KITCHEN
ISLAND

S I N T E R E D S T O N E

COMPANY PROFILE

Benaly&bigcc
Super Headquarters



ENTERPRISE POSITIONING

As a benchmark in China's sintered stone industry, BIGCC focuses on R&D, manufacturing, sales, and integrated solutions for mid-to-high-end products. Originating from a 2006 ceramic enterprise, it shifted to sintered stone in 2019 and has built a mature industrial ecosystem.

CORE VALUES

Operation Philosophy:

Innovation-Driven Leadership, Uncompromising Quality, Extraordinary service, Win-win cooperation;

Strategic Direction:

Intelligent Manufacturing Enhancement, Core Technical Breakthroughs, Global Network Expansion, Industrial Ecosystem Optimization;

Corporate Mission:

Empower Employee Development, Deliver Customer Value, Lead Industry Advancement;

Corporate Vision:

To Become a Global Leader in Sintered Stone Solutions;

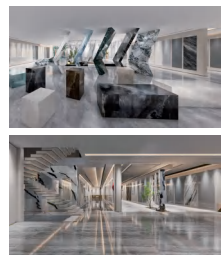


Manufacturing Scale & Capacity:

4

Intelligent Production Bases

total area: 2,800 mu \approx 187 hectares; 10 intelligent double-layer, production lines, 15 million m² annual capacity per base



Technical Expertise&Quality Assurance:

design options available in stock

1,000* professional technical team mastering "Continuous Pattern+Seamless Matching Infinite Layout" design technology; 20,000m² showroom with full-size specifications and 3,000* design options available in stock; Strict compliance with international quality management systems ensures products meet the highest standards

3000+

Supply Chain Support:

20
million m²

ready inventory for timely delivery

3,000* in-stock styles across all specifications





PRODUCT ADVANTAGES AND APPLICATIONS

15 SIZES

10 TEXTURE
SERIES

8 SURFACE
FINISHES

INNOVATIVE PRODUCT ADVANTAGES

Custom Specifications:

15 sizes×6 thicknesses, full-dimensional customization options to fit diverse scenario requirements

Diverse Design:

10 texture series (luxury stone/cave stone/wood grain, etc.) + 8 surface finishes (polished/matte, etc.)

Environmental Standards:

Using eco-friendly processes and materials, compliant with international environmental certifications

SINTERED STONE APPLICATIONS



LARGE
PUBLIC SUIT



BUILDING
CURTAIN WALL



HOME
DECORATION



WHOLE HOUSE
CUSTOMIZATION



FINISHED HOME



GROUND



INTEGRATED
BATHROOM

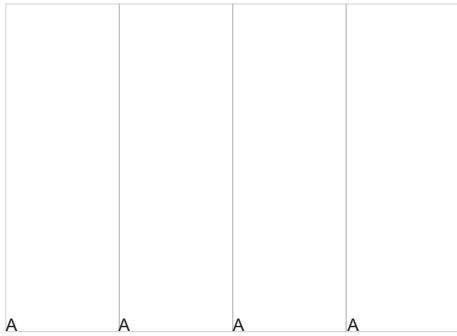


INTEGRATED
KITCHEN

MATTE/MATTE CARVING

SIZE:900x2600

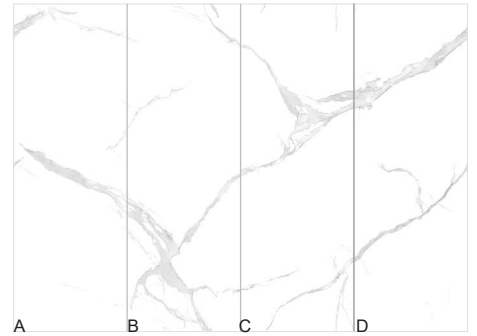
THICKNESS:9MM



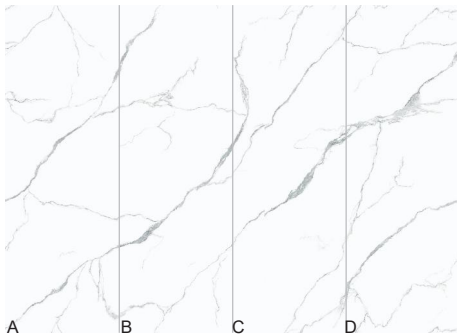
PURE WHITE
CODE:BNL926000Y



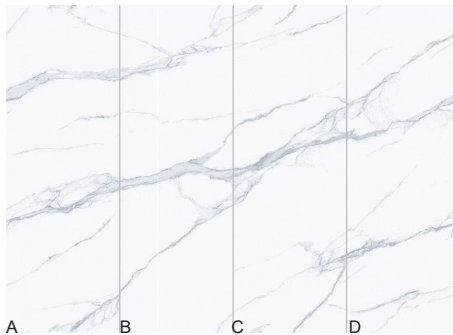
BNLS26900



VICTORIA
CODE:BNL926001Y



CALACATTA WHITE
CODE:BNL926006Y



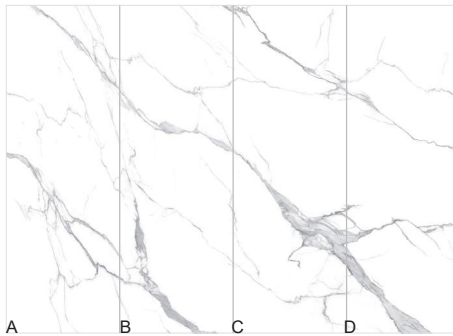
CUSTER WHITE
CODE:BNL926005Y



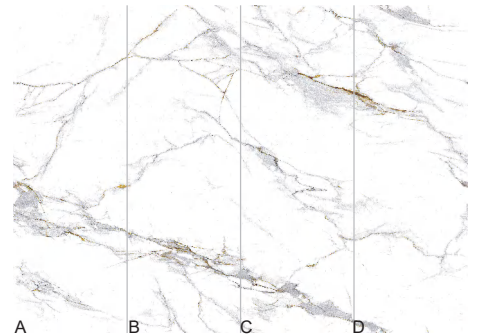
PEARL WHITE
CODE:BNL926004Y



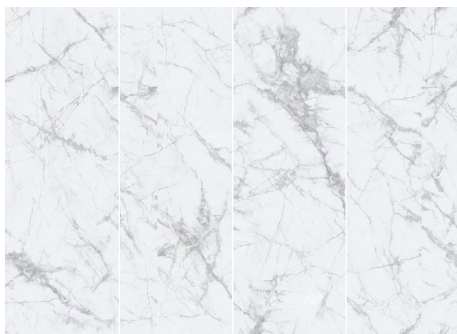
ROYAL FISH BELLY WHITE
CODE:BNL926116Y



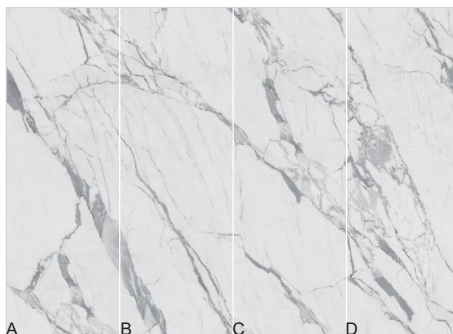
GREEK WHITE
CODE:BNL926008Y



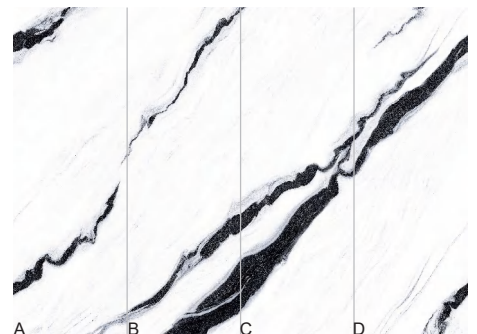
CLASSIC FISH BELLY GOLD
CODE:BNL926041Y



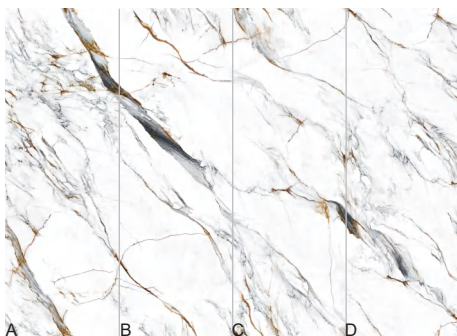
NEW COLD RIVER SNOW
CODE:BNL926399YJ



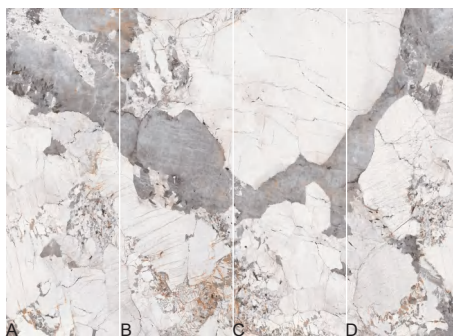
POLKA WHITE
CODE:BNL926183Y



PANDA WHITE
CODE:BNL926048YJ



CARVING FISH BELLY GOLD
CODE:BNL926308Y(BNL926163Y)



PANDORA
CODE:BNL926019Y

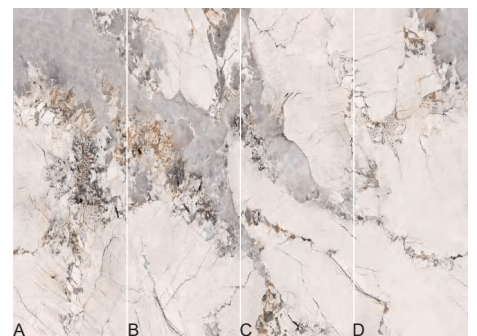


IMAGE PANDORA
CODE:BNL926018Y

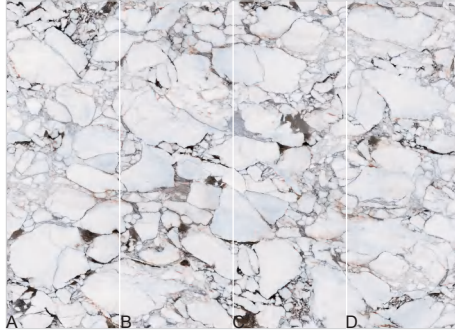
MATTE/MATTE CARVING

SIZE:900x2600

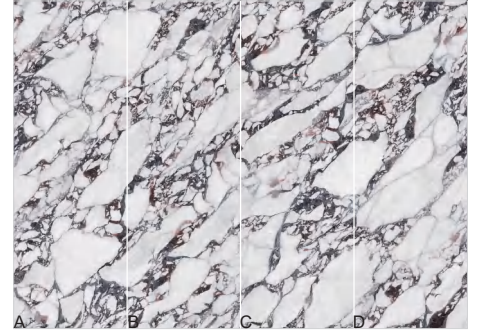
THICKNESS:9MM



ARABESCATO CORCHIA
CODE:BNL926471YJ



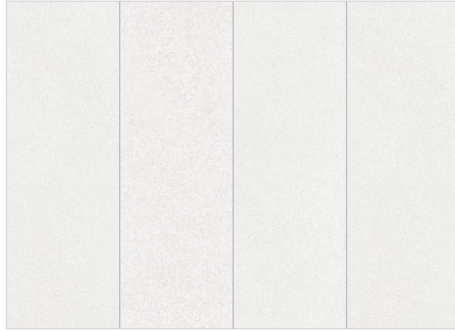
CREAM BVLGARI
CODE:BNL926198Y



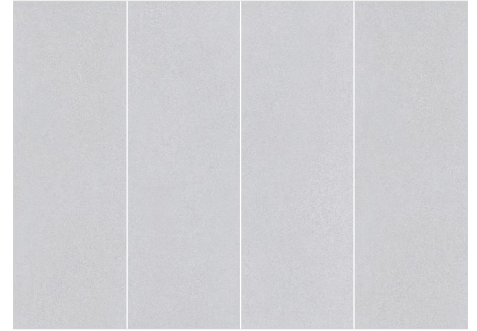
BVLGARI
CODE:BNL926193Y



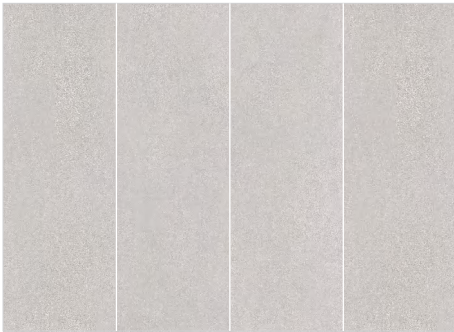
SUPREME BVLGARI
CODE:BNL926197Y



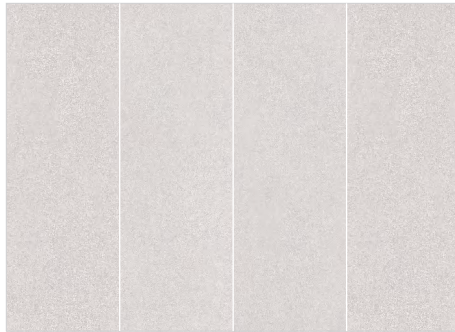
RHYME-DESERT
CODE:BNL926Y01



RHYME-LANTERN GRASS
CODE:BNL926Y02



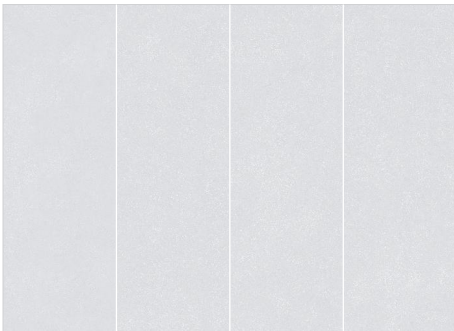
RHYME-MILK TEA
CODE:BNL926Y03



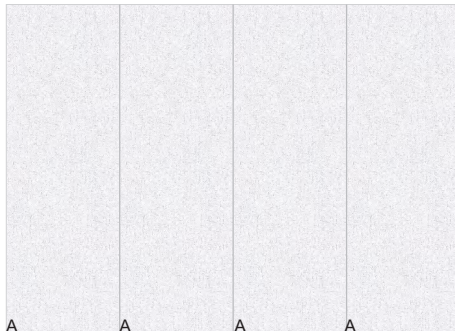
RHYME-ROSE
CODE:BNL926Y04



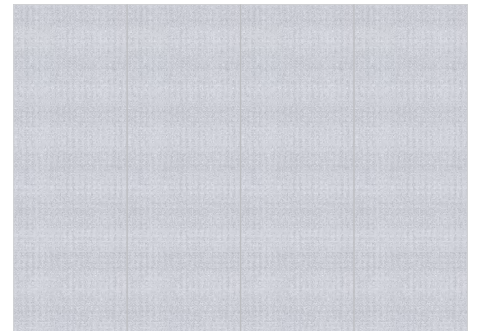
RHYME-GINKGO
CODE:BNL926Y05



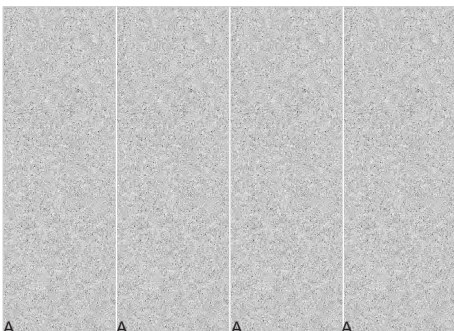
SIMPLE-BLUIISH WHITE
CODE:BNL926YJ19



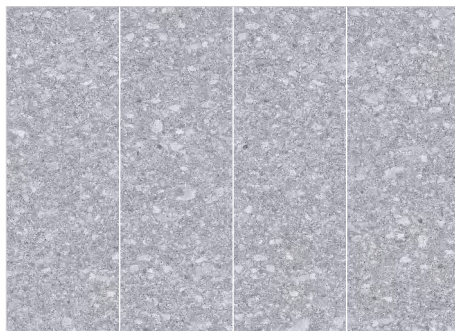
NORDIC KAS LIGHT BEIGE
CODE:BNL926YJ28



NORDIC KAS LIGHT GREY
CODE:BNL926YJ26



KARI ICE CRYSTAL-TERRAZZO
CODE:BNL926380Y



ULTIMATE GREY-TERRAZZO
CODE:BNL926498Y

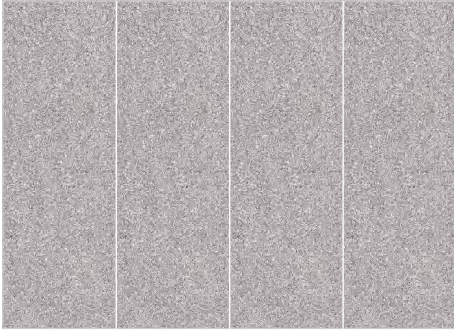


ASTON GREY-TERRAZZO
CODE:BNL926371Y

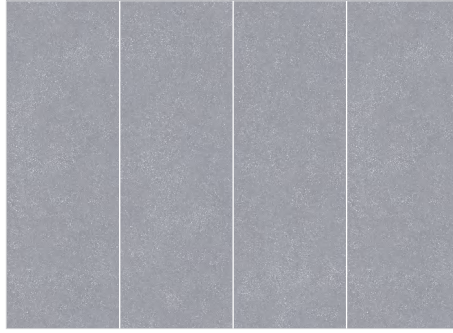
MATTE/MATTE CARVING

SIZE:900x2600

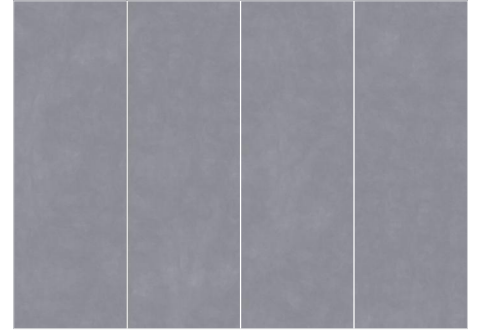
THICKNESS:9MM



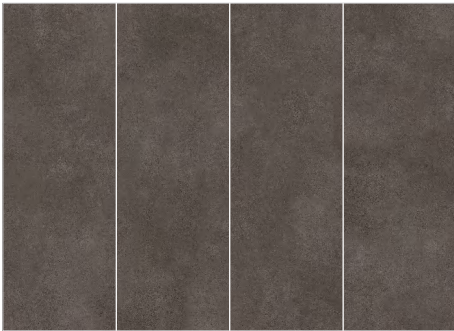
MOROCCO-TERRAZZO
CODE:BNL926221Y



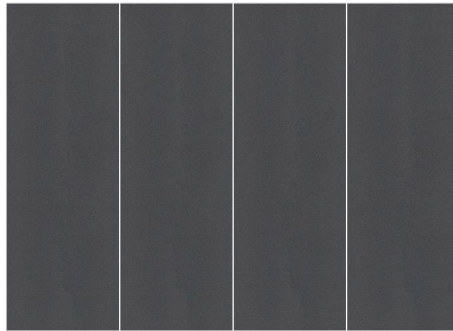
SIMPLE-WARM GREY
CODE:BNL926YJ16



SIMPLE-MORNING GREY
CODE:BNL926YJ17



SIMPLE-COFFEE
CODE:BNL926YJ20



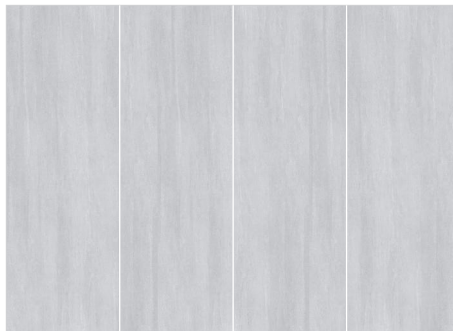
STARRY SKY-POLAR NIGHT
CODE:BNL926394Y



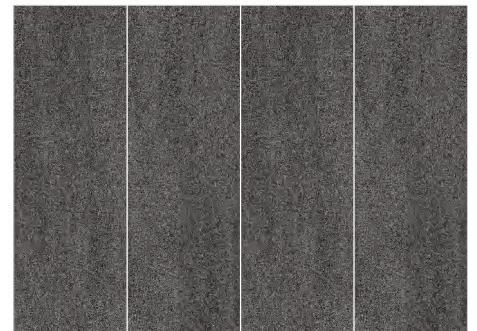
ANDEAN BEIGE SANDSTONE
CODE:BNL926481YJ



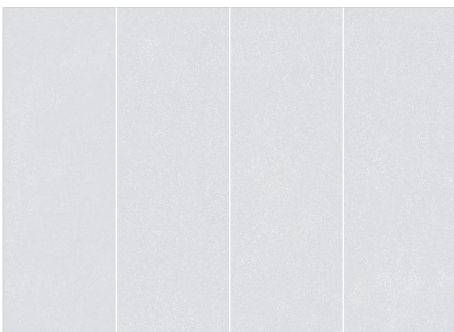
ANDEAN LIGHT GREY SANDSTONE
CODE:BNL926482YJ



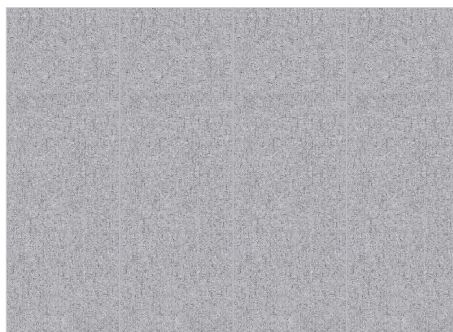
GERMAN SANDSTONE LIGHT GREY
CODE:BNL926YJ11



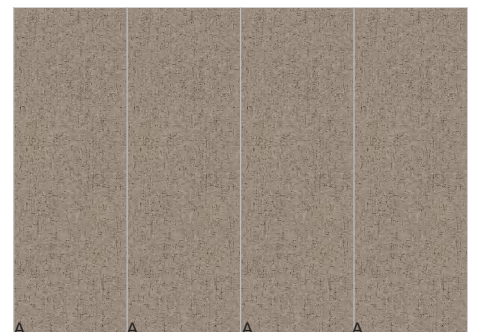
GERMAN SANDSTONE DARK GREY
CODE:BNL926YJ12



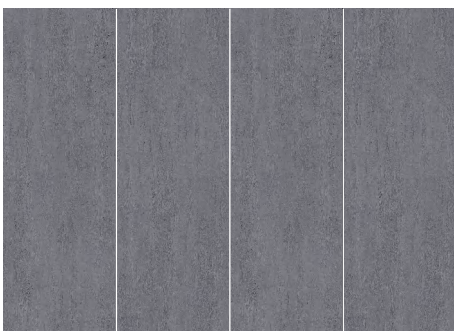
SIMPLE-BLUISH WHITE
CODE:BNL926YJ19



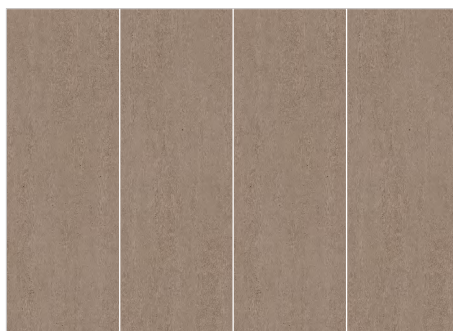
NORDIC KAS MIDDLE GREY
CODE:BNL926YJ27



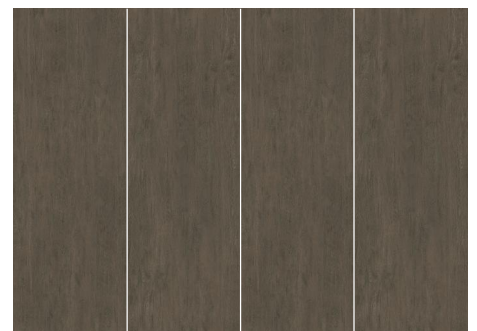
NORDIC KAS BROWN
CODE:BNL926YJ29



SANDALWOOD SILVER GREY
CODE:BNL926147YJ



SANDALWOOD YELLOW
CODE:BNL926148YJ

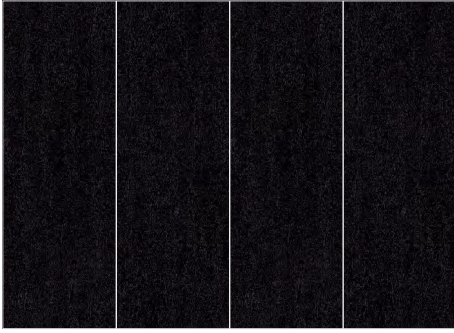


SANDALWOOD BROWN
CODE:BNL926146YJ

MATTE/MATTE CARVING

SIZE:900x2600

THICKNESS:9MM



SANDALWOOD BLACK
CODE:BNL926149YJ



IRAN MIBAI CAVE
CODE:BNL926593Y



IRAN SUPER WHITE CAVE
CODE:BNL926594Y



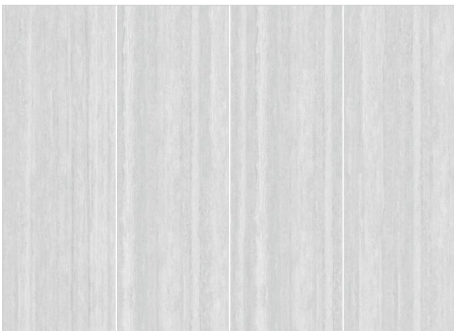
IRAN BEIGE CAVE
CODE:BNL926596Y



IRAN SILVER GREY CAVE
CODE:BNL926595Y



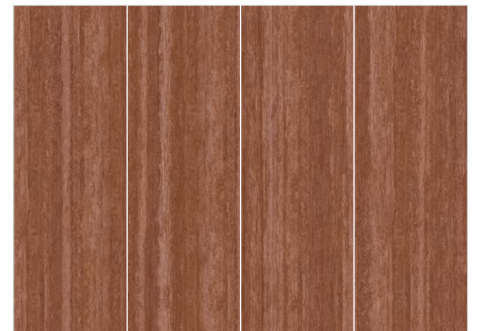
ROMAN IVORY WHITE CAVE
CODE:BNL926590YJ



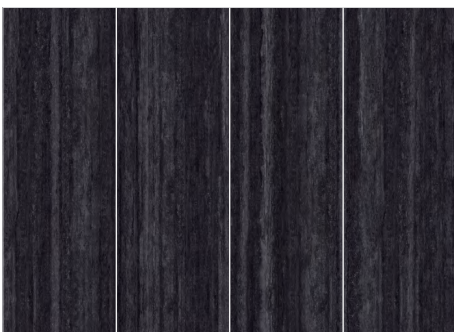
ROMAN CAVE STONE-WHITE
CODE:BNL926YJ25



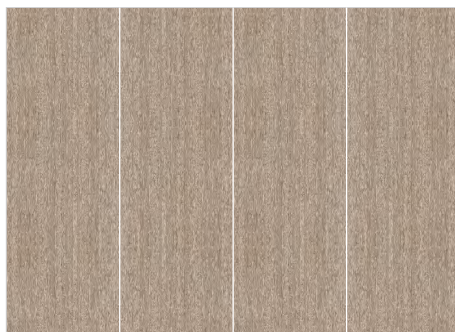
ROMAN CAVE STONE-YELLOW
CODE:BNL926200YJ



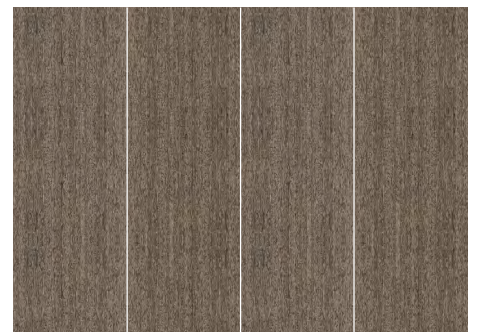
ROMAN CAVE STONE-RED CAVE
CODE:BNL926597YJ



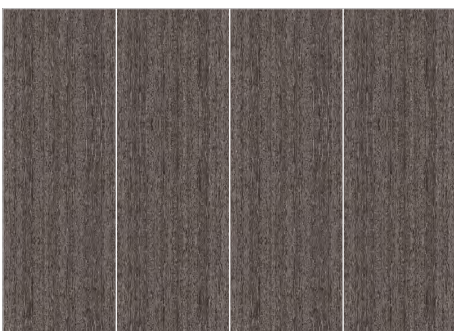
ROMAN CAVE STONE-BLACK CAVE
CODE:BNL926598YJ



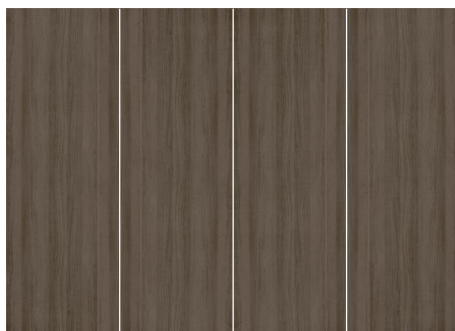
SOUTH AMERICAN TEAK-APRICOT YELLOW
CODE:BNL926155YJ



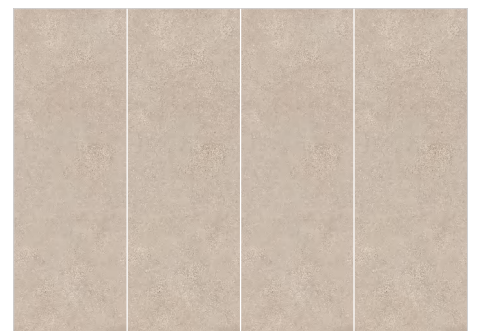
SOUTH AMERICAN TEAK-DARK BROWN
CODE:BNL926152YJ



SOUTH AMERICAN TEAK-DARK COFFEE BROWN
CODE:BNL926156YJ



NORTH AMERICAN BLACK WALNUT
CODE:BNL926400YJ

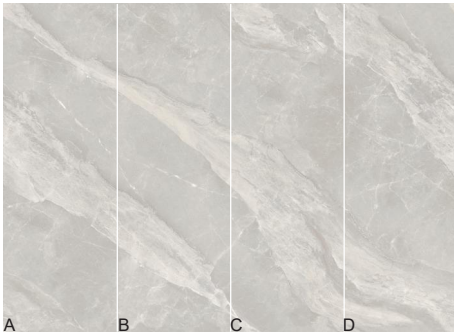


OKALA LIGHT YELLOW
CODE:BNL926142YJ

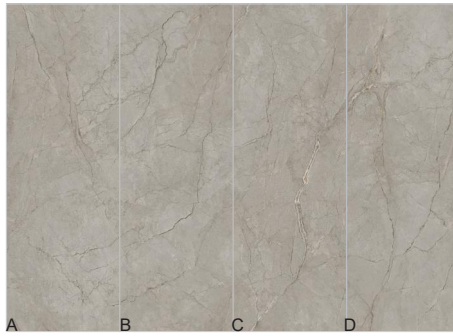
MATTE/MATTE CARVING

SIZE:900x2600

THICKNESS:9MM



XIANGNA
CODE:BNL92687YJ



ITALIAN CLOUD GREY
CODE:BNL926385Y



MAYA GREY-LIGHT GREY
CODE:BNL926YJ034



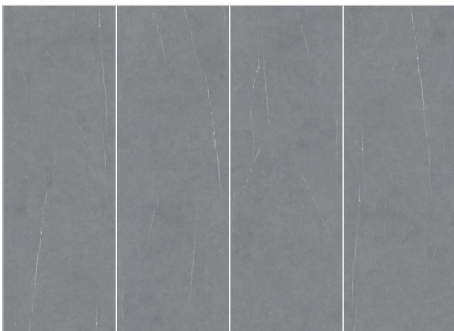
MAYA GREY-DARK GREY
CODE:BNL926YJ033



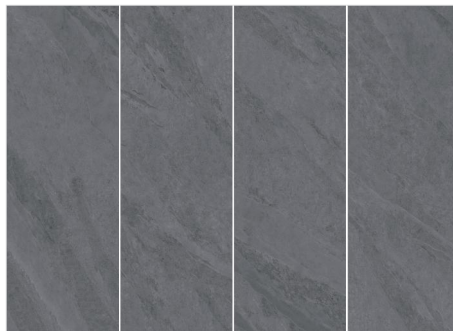
BRNO LIGHT GREY
CODE:BNL926144YJ



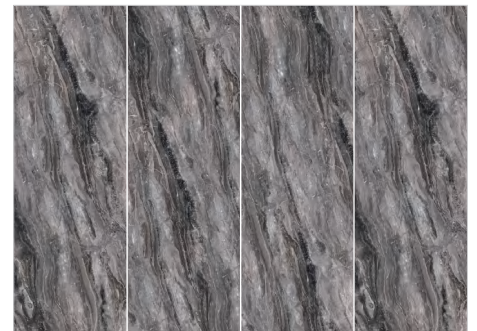
BRNO DARK GREY
CODE:BNL926143YJ



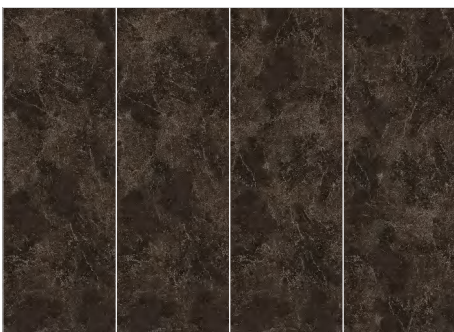
KOBE GRAY-SHALLOW
CODE:BNL926YJ13



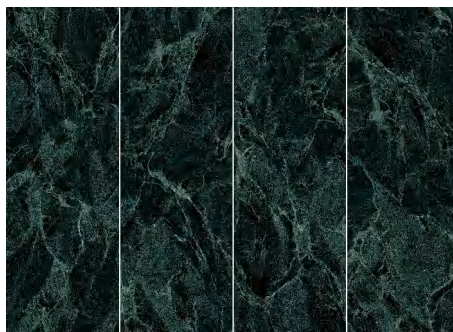
GREEK GREY-MEDIUM GREY
CODE:BNL926YJ22



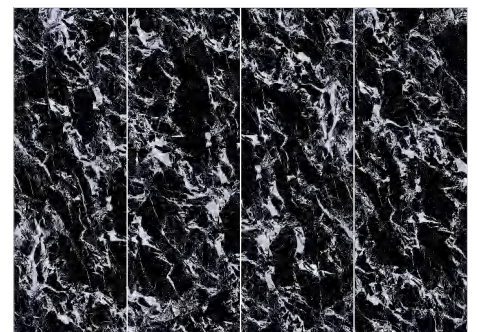
TOP VENICE BROWN
CODE:BNL926454Y



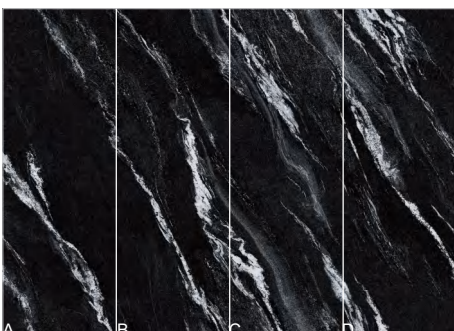
O'NEAL GREY
CODE:BNL926145YJ



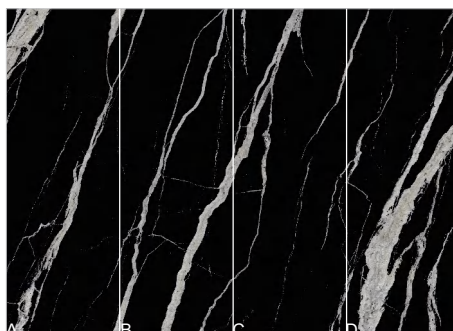
PRADA GREEN
CODE:BNL926025Y



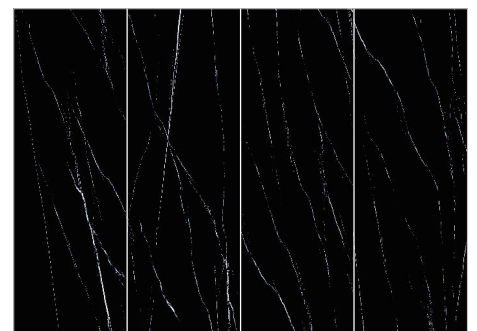
NAPOLEON BLACK
CODE:BNL926199Y



PHANTOM MOON BLACK
CODE:BNL926405Y



FOSSIL BLACK
CODE:BNL926406Y



NERO MARGIUA
CODE:BNL926203Y

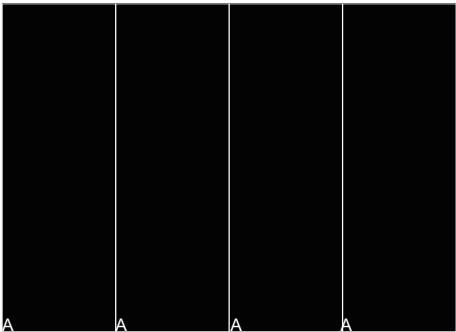
MATTE/MATTE CARVING

SIZE:900x2600

THICKNESS:9MM



BLACK KNIGHT
CODE:BNL926430Y



PURE BLACK
CODE:BNL92614Y

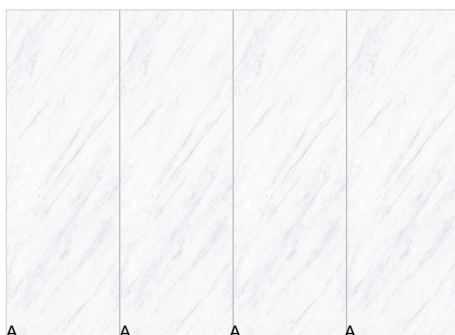
VELVET

SIZE:900x2600

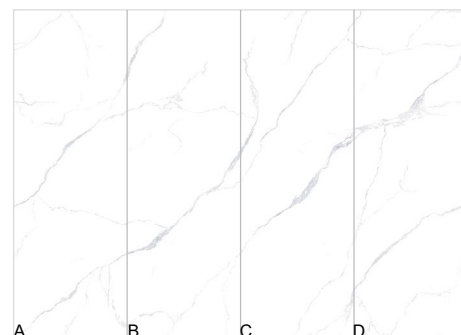
THICKNESS:9MM



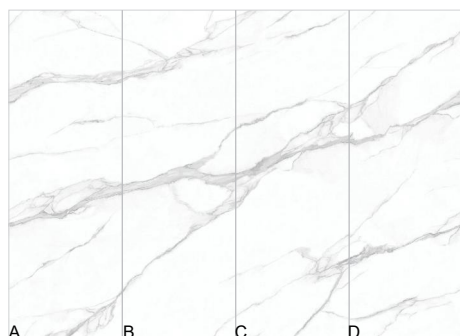
PURE WHITE
CODE:BNL926000F



ARISTON
CODE:BNL926037F



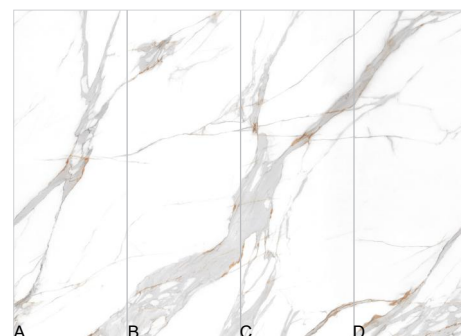
KARAKATA WHITE
CODE:BNL926006F



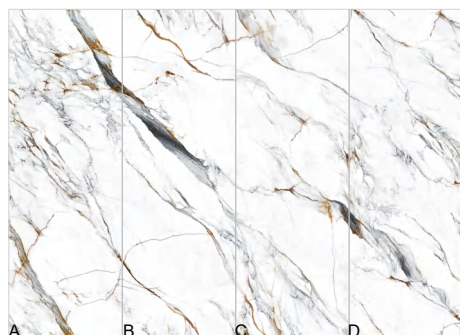
CUSTER WHITE
CODE:BNL926005F



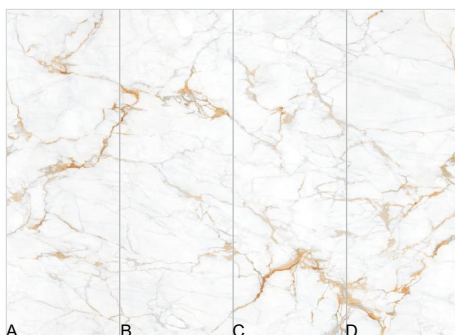
GOLDEN THREAD WHITE
CODE:BNL926481F



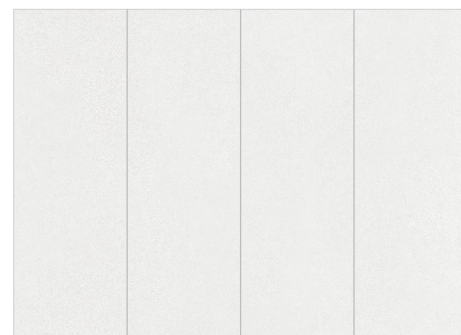
NEW CARVING FISH BELLY GOLD
CODE:BNL926539F



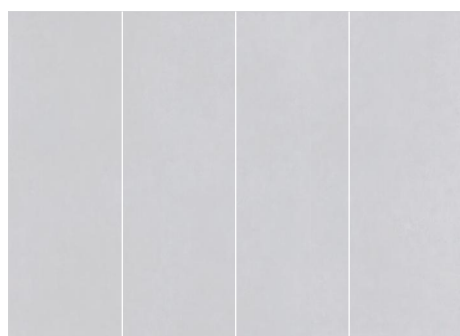
CARVING FISH BELLY GOLD
CODE:BNL926163F



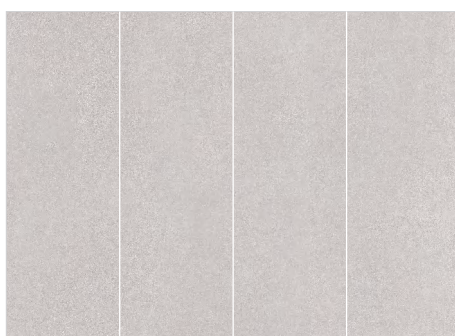
ITALIAN WHITE GOLD FLOWER
CODE:BNL92611F



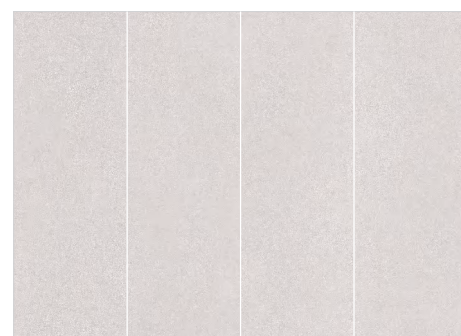
RHYME-DESERT
CODE:BNL926F01



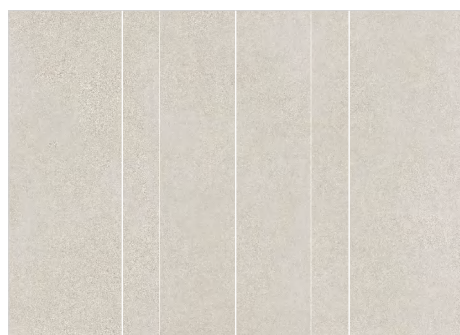
RHYME-LANTERN GRASS
CODE:BNL926F02



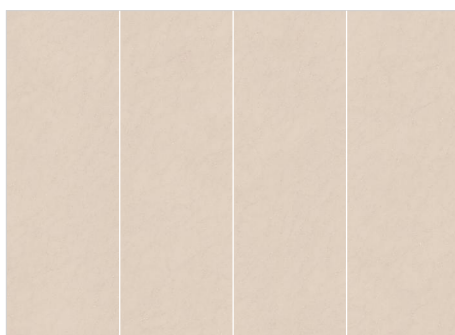
RHYME-MILK TEA
CODE:BNL926F03



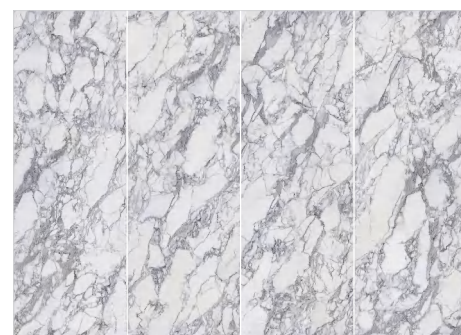
RHYME-ROSE
CODE:BNL926F04



RHYME-GINKGO BILOBA
CODE:BNL926F05



ULTIMATE SANANA
CODE:BNL926075F



ARABESCATO CORCHIA
CODE:BNL926471F

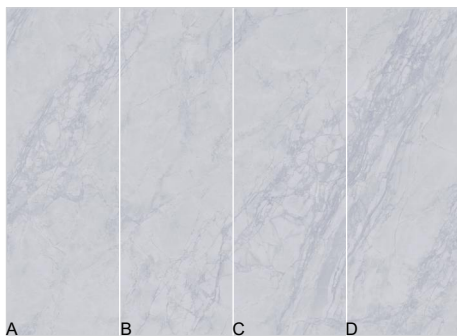
VELVET

SIZE:900x2600

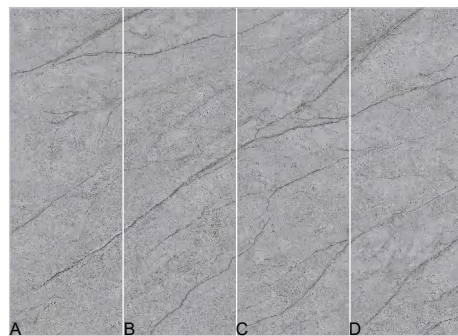
THICKNESS:9MM



SNOW MOUNTAIN WHITE
CODE:BNL926489F



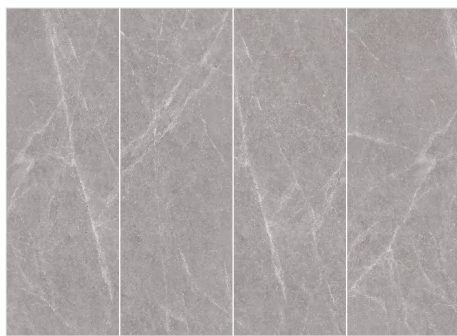
COLD RIVER MOON SHADOW
CODE:BNL926487F



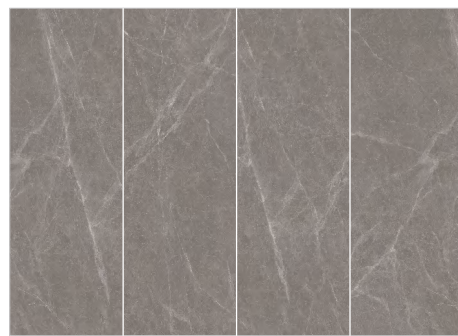
NORMANDY CLOUD GREY
CODE:BNL926488F



NORMANDY GREY
CODE:BNL926480F



PREMIUM LIGHTNING GREY-APRICOT GREY
CODE:BNL926348F

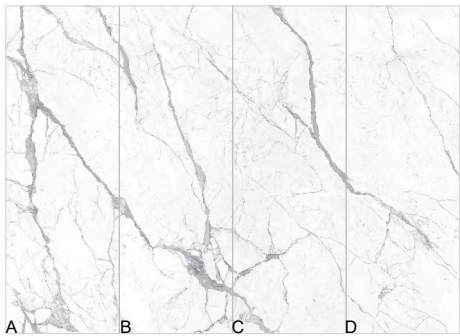


PREMIUM LIGHTNING GREY-MILK COFFEE
CODE:BNL926347F

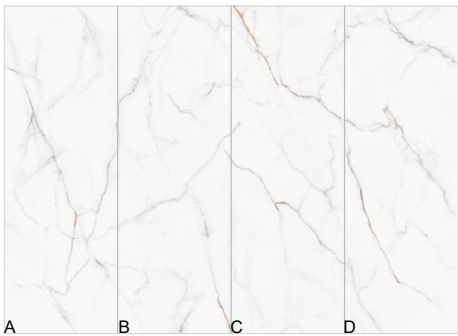
REPLICATED GLAZE

SIZE:900x2600

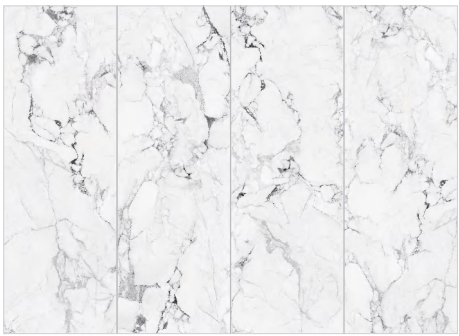
THICKNESS:9MM



ITALIAN FISH BELLY WHITE
CODE:BNL9269345FJ



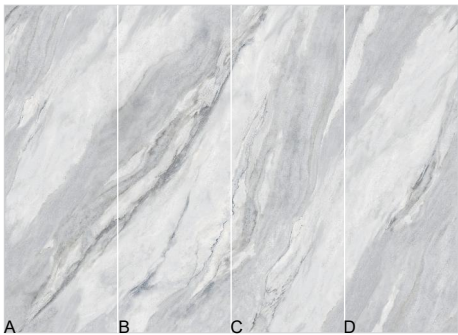
JIN SI BEI YU
CODE:BNL9269636FJ



PALAMI
CODE:BNL9269520FJ



ARABESCATO CORCHIA
CODE:BNL9269471FJ



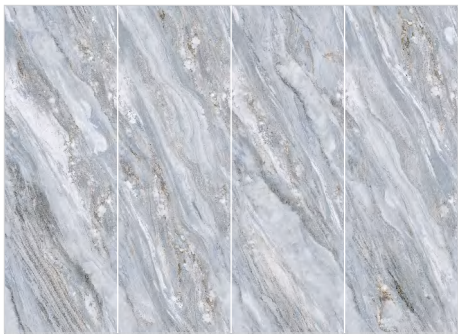
SHUIYUN YARN
CODE:BNL9269027FJ



FONTAINEBLEAU
CODE:BNL9269522FJ



LUHU AUTUMN WATER
CODE:BNL9269526FJ



VAST STARS
CODE:BNL9269551FJ



TANRIS STONE
CODE:BNL9269556FJ



LEIDEN GREY
CODE:BNL9269554FJ



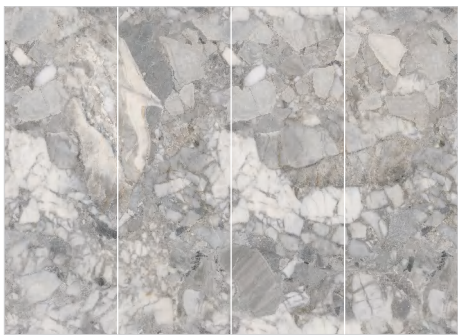
KAYOL GREY
CODE:BNL9269527FJ



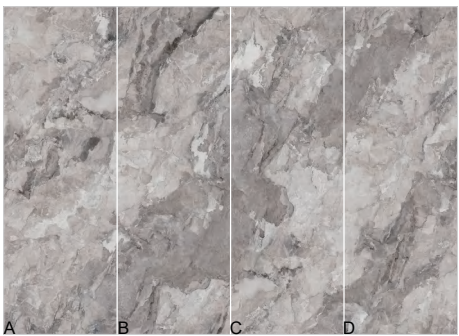
ZHEN SHI XIAN HUA PANDORA
CODE:BNL9269553FJ



CLEAN WATER STONE
CODE:BNL9269177FJ



CLEAN WATER STONE-TOPAZ
CODE:BNL9269179FJ



MAPLE LEAF BROWN
CODE:BNL9269210FJ