

2025 PRODUCT BROCHURE

SIZE:750X1500MM

APPLICATION SPACE



BUSINESS
CENTER



PUBLIC
BUILDING



TV
BACKDROP



SOFA
BACKDROP



TABLE



KITCHEN
ISLAND

S I N T E R E D S T O N E

COMPANY PROFILE

Benaly&bigcc
Super Headquarters



ENTERPRISE POSITIONING

As a benchmark in China's sintered stone industry, BIGCC focuses on R&D, manufacturing, sales, and integrated solutions for mid-to-high-end products. Originating from a 2006 ceramic enterprise, it shifted to sintered stone in 2019 and has built a mature industrial ecosystem.

CORE VALUES

Operation Philosophy:

Innovation-Driven Leadership, Uncompromising Quality, Extraordinary service, Win-win cooperation;

Strategic Direction:

Intelligent Manufacturing Enhancement, Core Technical Breakthroughs, Global Network Expansion, Industrial Ecosystem Optimization;

Corporate Mission:

Empower Employee Development, Deliver Customer Value, Lead Industry Advancement;

Corporate Vision:

To Become a Global Leader in Sintered Stone Solutions;



Manufacturing Scale & Capacity:

4

Intelligent Production Bases

total area: 2,800 mu \approx 187 hectares; 10 intelligent double-layer, production lines, 15 million m² annual capacity per base



Technical Expertise & Quality Assurance:

design options available in stock

1,000* professional technical team mastering "Continuous Pattern+Seamless Matching Infinite Layout" design technology; 20,000m² showroom with full-size specifications and 3,000* design options available in stock; Strict compliance with international quality management systems ensures products meet the highest standards

3000+

Supply Chain Support:

20
million m²

ready inventory for timely delivery

3,000* in-stock styles across all specifications





PRODUCT ADVANTAGES AND APPLICATIONS

15 SIZES

10 TEXTURE
SERIES

8 SURFACE
FINISHES

INNOVATIVE PRODUCT ADVANTAGES

Custom Specifications:

15 sizes×6 thicknesses, full-dimensional customization options to fit diverse scenario requirements

Diverse Design:

10 texture series (luxury stone/cave stone/wood grain, etc.) + 8 surface finishes (polished/matte, etc.)

Environmental Standards:

Using eco-friendly processes and materials, compliant with international environmental certifications

SINTERED STONE APPLICATIONS



LARGE
PUBLIC SUIT



BUILDING
CURTAIN WALL



HOME
DECORATION



WHOLE HOUSE
CUSTOMIZATION



FINISHED HOME



GROUND



INTEGRATED
BATHROOM

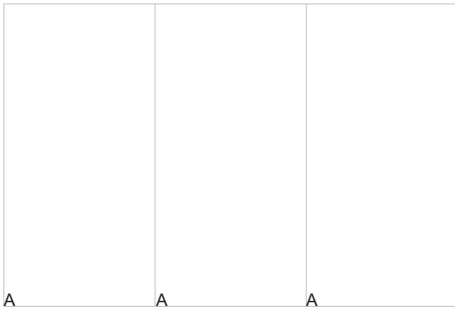


INTEGRATED
KITCHEN

HEAVENLY VELVET

SIZE:750x1500

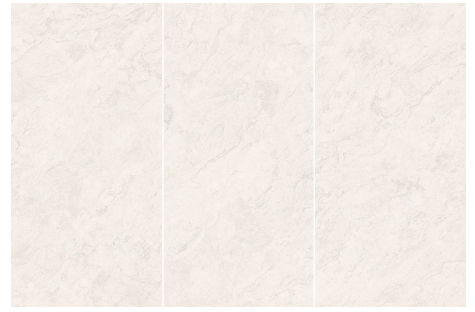
THICKNESS:9MM



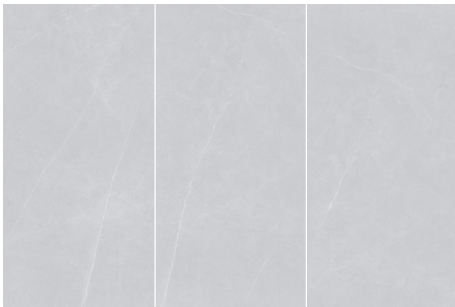
A A A
PURE WHITE
CODE:ITA715T909



ICELAND WHITE
CODE:ITA715T908



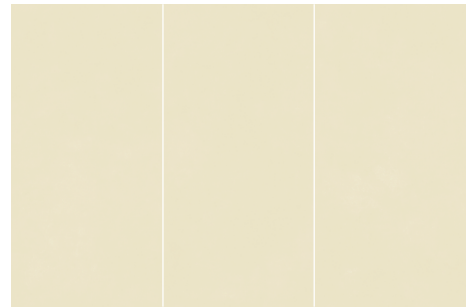
ARKIA MI BAI
CODE:ITA715T911



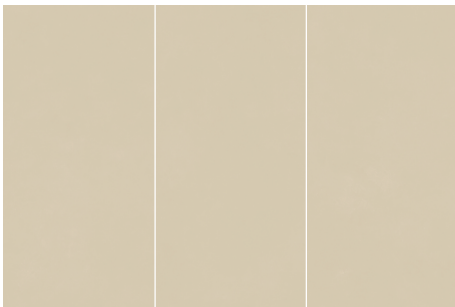
BULGARIAN RICE GREY
CODE:ITA715T915



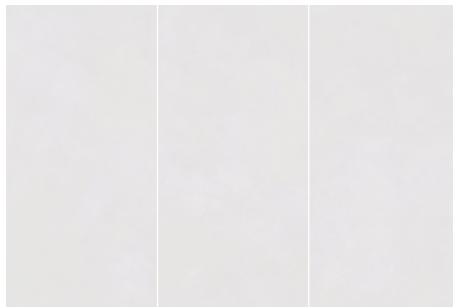
BULGARIAN RICE APRICOT
CODE:ITA715T912



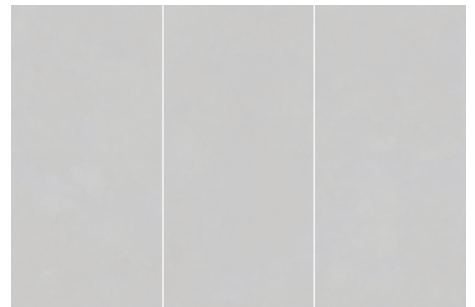
ATINI CREAM YELLOW
CODE:ITA715T902



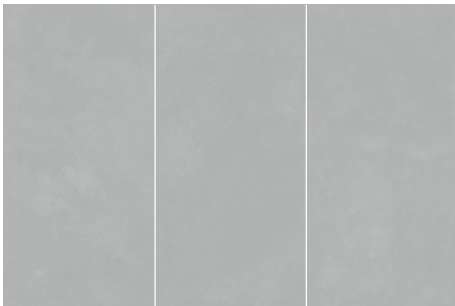
ATINI RICE APRICOT
CODE:ITA715T904



ATINI CREAM WHITE
CODE:ITA715T901



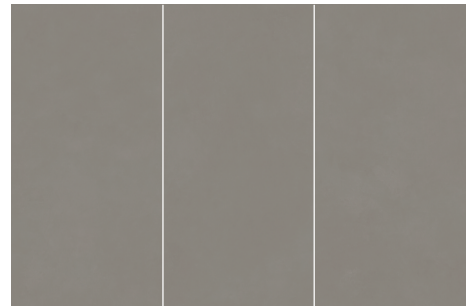
ATINI RICE GREY
CODE:ITA715T903



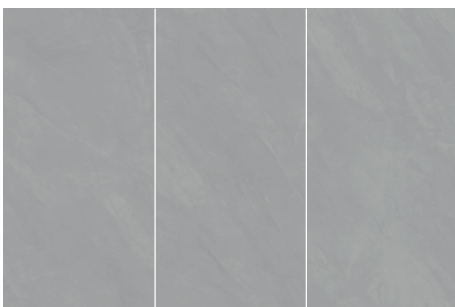
ATINI LIGHT GREY
CODE:ITA715T905



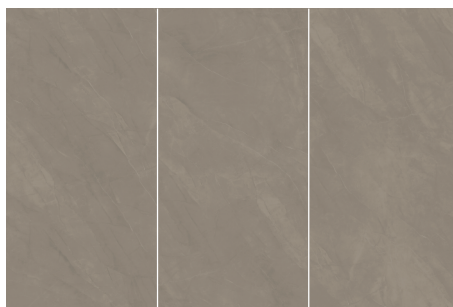
ATINI GREY
CODE:ITA715T906



ATINI KAQI
CODE:ITA715T907



PUPES GREY
CODE:ITA715T913

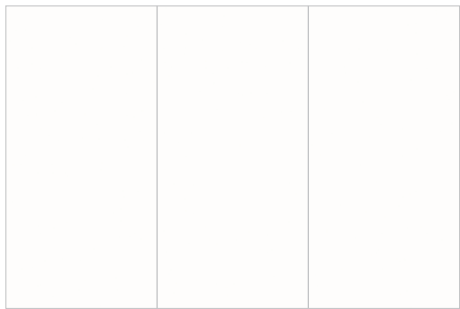


PUPES COFFEE
CODE:ITA715T914

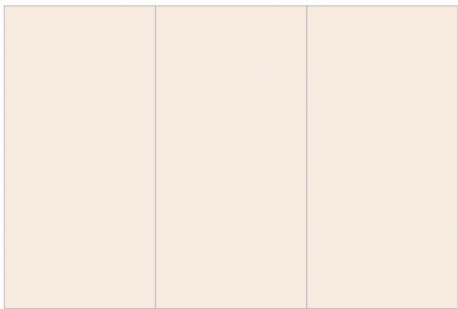
SUPER WHITE BODY + SILK FINISH

SIZE:750x1500

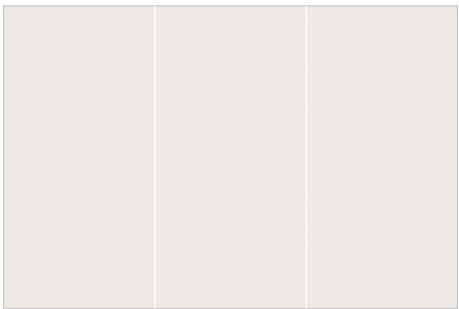
THICKNESS:10MM



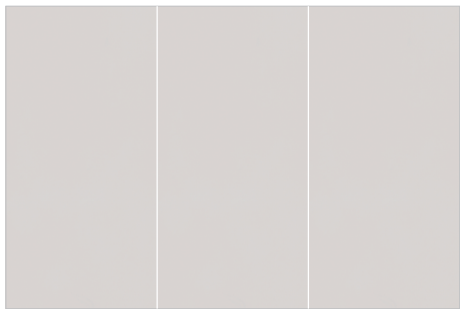
CREAM WHITE
CODE:2M71501



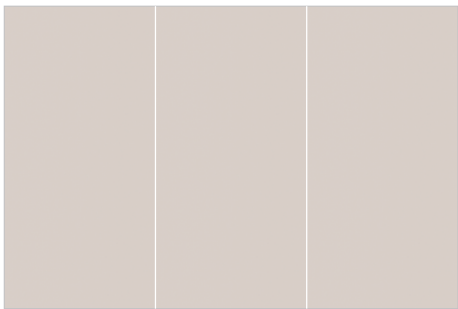
CREAM YELLOW
CODE:2M71502



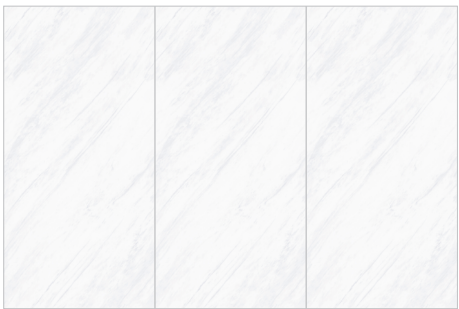
CREAM
CODE:2M71506



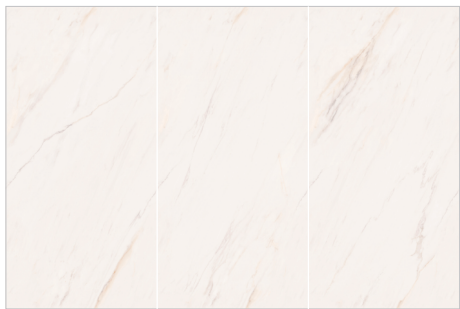
PREMIUM GREY
CODE:2M71504



CREAM COFFEE
CODE:2M71503



YASHI WHITE
CODE:2M71508



FENGLIN WHITE
CODE:2M71509



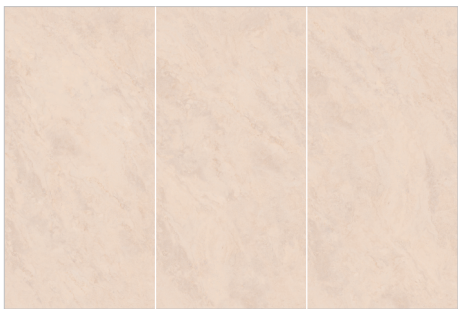
ITALIAN FISH BELLY WHITE
CODE:2M71522



STRIPED-ROMAN WHITE CAVE
CODE:2M71510



BALRO
CODE:2M71521



STRIATED-ROMAN WHITE CAVE
CODE:2M71511



GREEK GREY
CODE:2M71519



CLOUD GREY
CODE:2M71518

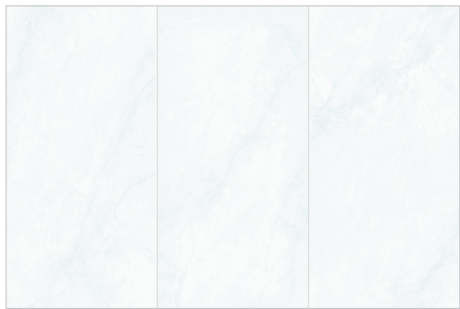


ANTIQUE ROMAN GREY
CODE:2M71517

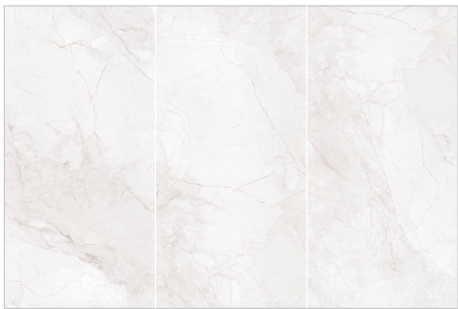
MICRO EMBOSSED-REPLICA TIME GLAZE

SIZE:750x1500

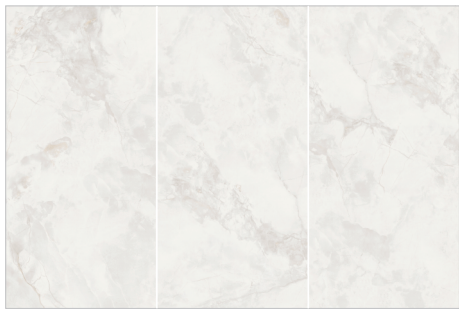
THICKNESS:10MM



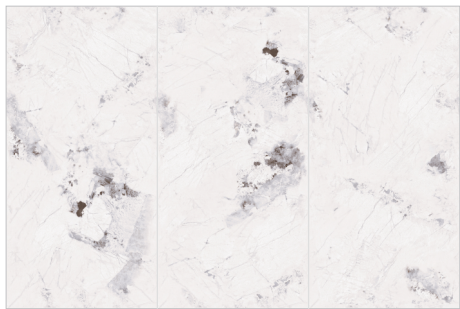
TRIDACNA WHITE
CODE:3M71530



SUPREME COLD RIVER SNOW
CODE:3M71527



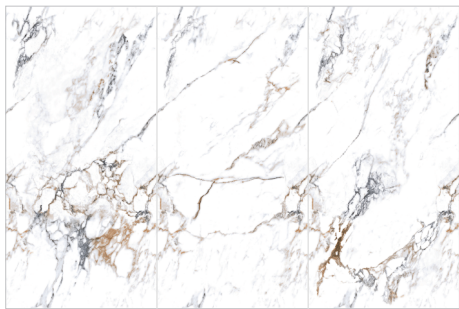
DUAN WHITE
CODE:3M71528



TASMAN
CODE:3M71512



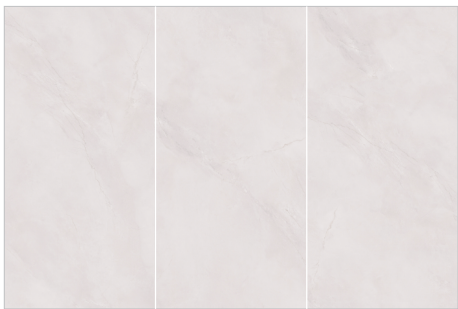
FENDI WHITE
CODE:3M71526



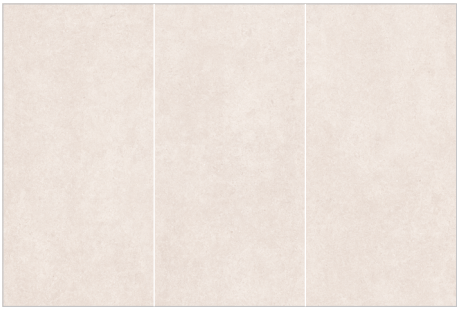
SERVIS
CODE:3M71513



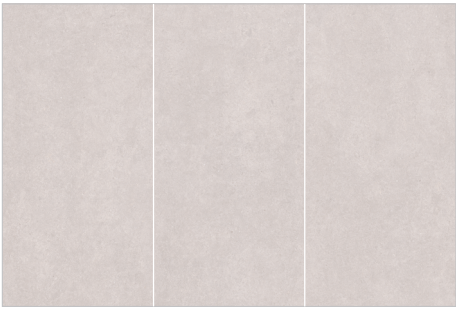
SCORCHED LEAF
CODE:3M71529



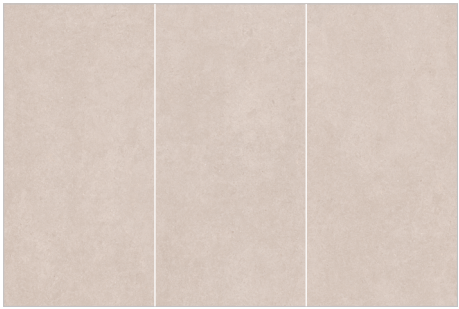
MIZHI
CODE:3M71525



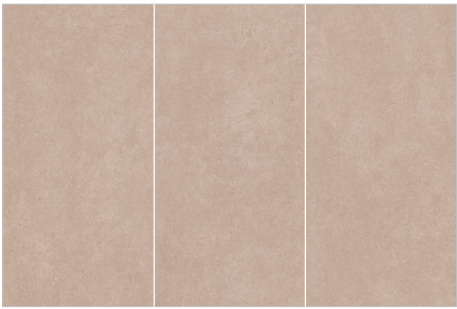
LIME STONE BEIGE
CODE:5M71538



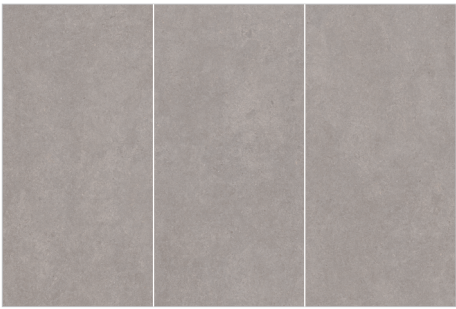
LIME STONE GREY WHITE
CODE:5M71541



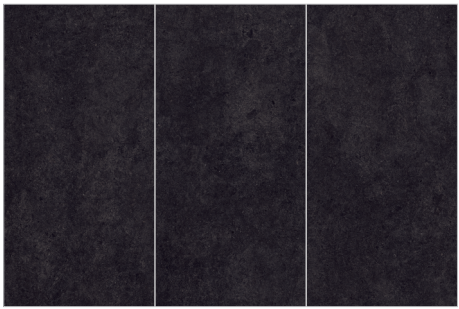
LIME STONE YELLOW
CODE:5M71539



LIME STONE COFFEE
CODE:5M71540



LIME STONE GREY
CODE:5M71542



LIME STONE BLACK
CODE:5M71543